

WWW.IWIDIN.COM



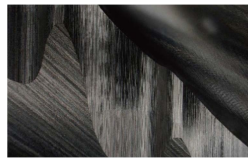
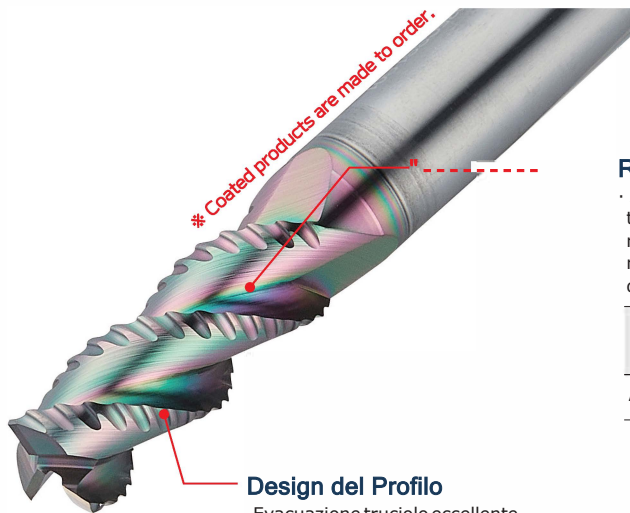
**NEW A-WING SERIES**



# A-WING ENDMILL

## ● Caratteristiche

- 1 Design specifico per lavorazioni di alluminio e leghe di alluminio
- 2 Evacuazione truciolo eccellente grazie allo speciale design del profilo
- 3 Possibilità di applicazione su un'ampia gamma di lavorazioni, dalla sgrossatura alla finitura
- 4 Ampia gamma disponibile



### Superficie dell'Elica

- Sforzo di taglio ridotto
- Evacuazione truciolo ottimizzata



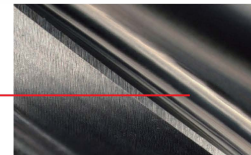
### Rivestimento D.L.C

· A base di carbonio puro, simile al diamante, applicato con la tecnologia FVAS (Filterd Vacuum Arc Source), il nostro rivestimento DLC offre una finitura superficiale ottimale riducendo significativamente l'accumulo di materiale da riporto durante la lavorazione di materiali come alluminio e rame.

Colore	Durezza (Hv)	Coefficiente di Frizione	Spessore (pin axis, $\mu\text{m}$ )	Max. Temp. Applicazione ( $^{\circ}\text{C}$ )
Arcobaleno	4000-7000	0.15	0.1-0.7	500

### Struttura Cilindrica

- Vibrazioni ridotte
- Frizioni diminuite, finitura superficie ottimizzata



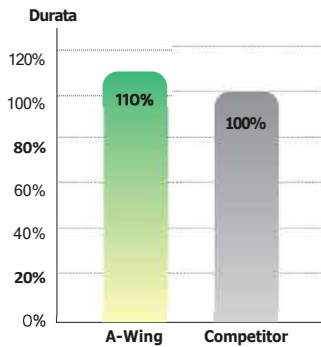
### Alta Tenacità Materiale

- Resistenza all'usura
- Lavorazione stabile



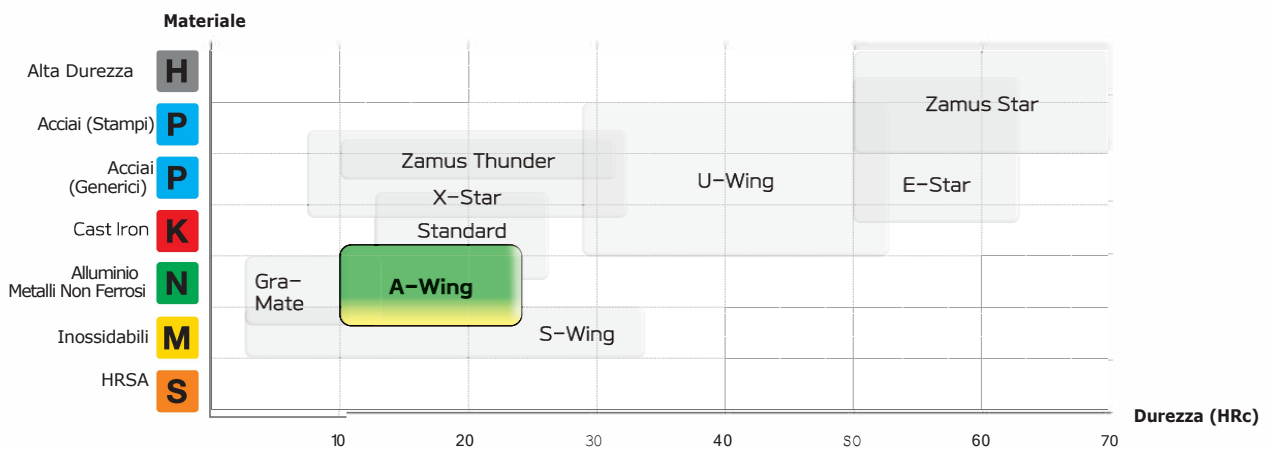
## ● Field Test

### ● Fresa Z3 D10.0, Sgrossatura



Al6061					
A-Wing					
	Competitor				
Parametri					
	RPM	Avanzamento	ap	ae	Refrigerante
Spallamento	8,500	4,300	10	5	Con Acqua

## ● Applicazioni



## ● Sistema di codifica

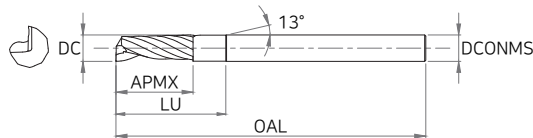
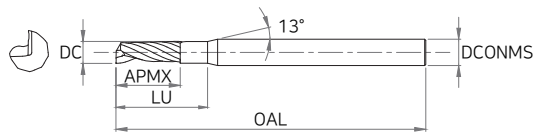
Series	Forma	Grado	Tipologia	Z	Dia.	Raggio	Lunghezza	Lunghezza Effettiva	Diametro Gambo	Rivestimento
AW (A-WING)	E: Piana	3: Grado	1: Scarico	1	1	0.05	2	7	4	e
	R: Torica	5: Grado	2: Gambo Lungo	2	-	-	-	-	-	-
	B: Sferica		8: Elica Alta	3	20	10	150	160	20	
	N: Rompitruciolo(Nick)									
	F: Sgrossatura									

Ex) AWE3120100354C (A-WING HRc30 2F Ø1 LOC3 Dia Gambo.4 Fresa Piana Rivestita)

**NEW**

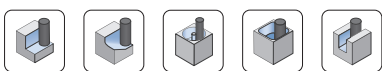


Series		Codice Serie	Geometria	Caratteristiche	Diametro		Pagina
Forma	Z				Min.	Max.	
Piana	F	AWE311		Z1 Fresa Piana	1	12	5-6
		AWE311...C					
	2F	AWE312		Z2 Fresa Piana	1	20	7-8
		AWE312...C					
	3F	AWE313		Z3 Fresa Piana	1	20	9-11
		AWE313...C					
3F	AWE323		Z3 Fresa Piana	1	20	12-13	
	AWE323...C						
Torica	2F	AWR312		Z1 Fresa Torics	1	20	14-15
		AWR312...C					
	3F	AWR313		Z3 Fresa Torica	1	20	16-17
		AWR313...C					
Sferica	2F	AWB312		Z2 Fresa Sferica	6	20	18
		AWB312...C					
Rompitruciolo (Nick)	3F	AWN513		Z3 Fresa con Rompitruciolo	3	20	19
		AWN513...C					
Sgrossatura	3F	AWF513		Z3 Elica 38° Fresa per Sgrossatura	4	20	20
		AWF513...C					
	3F	AWF583		Z3 Elica 45° Fresa per Sgrossatura	4	20	21
		AWF583...C					
<b>Parametri Raccomandati</b>							22-27



### ► Tolerance

D		Shank Dia
D1 ~ D5	0 ~ -0.02	h5
D6 ~ D12	0 ~ -0.03	



EDP No		DC	APMX	LU	OAL	DCONMS
Uncoated	Coated					
AWE311 01003	AWE311 01003C	1.0	3	8	45	6
AWE311 010045	AWE311 010045C	1.0	4.5	9.5	45	6
AWE311 01006	AWE311 01006C	1.0	6	11	50	6
AWE311 01203	AWE311 01203C	1.2	3	8	45	6
AWE311 01205	AWE311 01205C	1.2	5	10	45	6
AWE311 01206	AWE311 01206C	1.2	6	11	50	6
AWE311 01504	AWE311 01504C	1.5	4	9	45	6
AWE311 01506	AWE311 01506C	1.5	6	11	50	6
AWE311 01508	AWE311 01508C	1.5	8	13	50	6
AWE311 02006	AWE311 02006C	2.0	6	11	50	6
AWE311 02008	AWE311 02008C	2.0	8	13	50	6
AWE311 02010	AWE311 02010C	2.0	10	15	50	6
AWE311 02507	AWE311 02507C	2.5	7	12	50	6
AWE311 02508	AWE311 02508C	2.5	8	13	50	6
AWE311 02510	AWE311 02510C	2.5	10	15	50	6
AWE311 02512	AWE311 02512C	2.5	12	17	50	6
AWE311 03008	AWE311 03008C	3.0	8	13	50	6
AWE311 03012	AWE311 03012C	3.0	12	17	50	6
AWE311 03015	AWE311 03015C	3.0	15	20	50	6
AWE311 04010	AWE311 04010C	4.0	10	15	50	6
AWE311 04015	AWE311 04015C	4.0	15	20	50	6
AWE311 04020	AWE311 04020C	4.0	20	25	60	6
AWE311 05013	AWE311 05013C	5.0	13	18	60	6
AWE311 05020	AWE311 05020C	5.0	20	25	60	6
AWE311 05025	AWE311 05025C	5.0	25	30	60	6
AWE311 06015	AWE311 06015C	6.0	15	22	60	6

Le frese rivestite sono realizzate su ordinazione

Applicazione in base ai Materiali

○ : GOOD ◎ : EXCELLENT

H		P			K	N			M	S
Temprati		Acciaio al carbonio	Acciaio Legato	Pretrattato	Ghisa	Rame	Grafite	Alluminio	INOX	HRSA
SKD61 ~HRC55	SKD11 HRC55~	~HB225	HB225~325	HRC30~50	~FCD500					
						○		◎		

# AWE311

## 1 FLUTES SQUARE ENDMILL

EDPNo		DC	APMX	LU	OAL	DCONMS
Uncoated	Coated					
AWE311 06020	AWE311 06020C	6.0	20	27	60	6
AWE311 06025	AWE311 06025C	6.0	25	32	60	6
AWE311 08020	AWE311 08020C	8.0	20	27	70	8
AWE311 08025	AWE311 08025C	8.0	25	32	75	8
AWE31110022	AWE31110022C	10.0	22	30	75	10
AWE31110030	AWE31110030C	10.0	30	38	80	10
AWE31112026	AWE31112026C	12.0	26	36	75	12
AWE31112035	AWE31112035C	12.0	35	45	90	12

\* Le frese rivestite sono realizzate su ordinazione

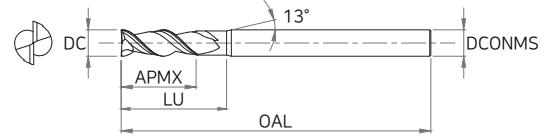
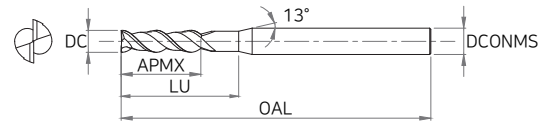
### ◆ Applicable working material

O : GOOD © : EXCELLENT

H		P			K	N			M	S
Hardened steel		Carbon Steel	Alloy Steel	Prehardened Steel	Cast Iron	Copper	Graphite	Aluminum	Stainless Steel	Heat Resistant Alloy
SKD61 -HRc55	SKD11 HRc55-	-HB225	HB225-325	HRc30-50	-FCD500					
						O		©		

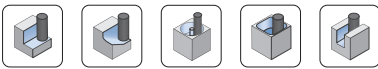
# AWE312

## 2 FLUTES SQUARE ENDMILL



### ► Tolerance

D		Shank Dia
All Sizes	0 ~ -0.02	h5



EDP No		DC	APMX	LU	OAL	DCONMS
Uncoated	Coated					
AWE312 01003S4	AWE312 01003S4C	1.0	3	8	50	4
AWE312 01006	AWE312 01006C	1.0	6	11	60	6
AWE312 01204	AWE312 01204C	1.2	4	9	50	6
AWE312 01506	AWE312 01506C	1.5	6	11	50	6
AWE312 01508	AWE312 01508C	1.5	8	13	60	6
AWE312 02006S4	AWE312 02006S4C	2.0	6	11	50	4
AWE312 02006	AWE312 02006C	2.0	6	11	50	6
AWE312 02010	AWE312 02010C	2.0	10	15	60	6
AWE312 02508	AWE312 02508C	2.5	8	13	55	6
AWE312 02512	AWE312 02512C	2.5	12	17	55	6
AWE312 03012	AWE312 03012C	3.0	12	17	55	6
AWE312 03015	AWE312 03015C	3.0	15	20	65	6
AWE312 03514	AWE312 03514C	3.5	14	19	57	6
AWE312 04014	AWE312 04014C	4.0	14	19	55	6
AWE312 04016	AWE312 04016C	4.0	16	21	65	6
AWE312 05017	AWE312 05017C	5.0	17	22	55	6
AWE312 05022	AWE312 05022C	5.0	22	27	60	6
AWE312 06017	AWE312 06017C	6.0	17	24	60	6
AWE312 06022	AWE312 06022C	6.0	22	29	60	6
AWE312 06025	AWE312 06025C	6	25	32	70	6
AWE312 07022	AWE312 07022C	7	22	29	65	8
AWE312 08023	AWE312 08023C	8	23	30	70	8
AWE312 08031	AWE312 08031C	8	31	38	80	8
AWE312 09025	AWE312 09025C	9	25	32	72	10
AWE312 10028	AWE312 10028C	10	28	36	75	10
AWE312 10036	AWE312 10036C	10	36	44	90	10

※ Coated products are made to order

### ► Applicable working material

○ : GOOD ◎ : EXCELLENT

H		P			K	N			M	S
Hardened steel		Carbon Steel	Alloy Steel	Prehardened Steel	Cast Iron	Copper	Graphite	Aluminum	Stainless Steel	Heat Resistant Alloy
SKD61 ~HRC55	SKD11 HRC55~	~HB225	HB225~325	HRC30~50	~FCD500					
						○		◎		

# AWE312

## 2 FLUTES SQUARE ENDMILL

EDPNo		DC	APMX	LU	OAL	DCONMS
Uncoated	Coated					
AWE31211030	AWE31211030C	11	30	38	ED	12
AWE31212033	AWE31212033C	12	33	43	ED	12
AWE31212041	AWE31212041C	12	41	51	95	12
AWE31212045	AWE31212045C	12	45	55	100	12
AWE31213035	AWE31213035C	13	35	45	85	14
AWE31214038S14	AWE31214038S14C	14	38	48	90	14
AWE3121403B	AWE31214038C	14	38	48	90	16
AWE31215040	AWE31215040C	15	40	50	90	16
AWE31216045	AWE31216045C	16	45	55	100	16
AWE31216053	AWE31216053C	16	53	63	110	16
AWE31218049	AWE31218049C	18	49	59	100	18
AWE312 20050	AWE312 20050C	20	50	60	110	20
AWE312 20055	AWE312 20055C	20	55	65	110	20

\* Coated products are made to order

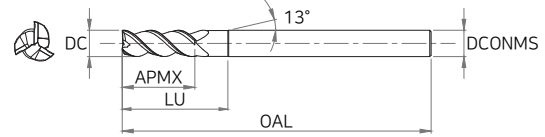
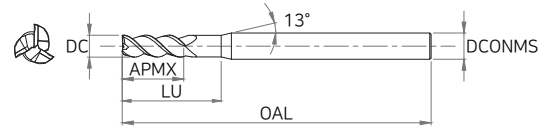
### ◆ Applicable working material

O : GOOD © : EXCELLENT

H		P			K	N			M	S
Hardened steel		Carbon Steel	Alloy Steel	Prehardened Steel	Cast Iron	Copper	Graphite	Aluminum	Stainless Steel	Heat Resistant Alloy
SKD61 -HRc55	SKD11 HRc55-	-HB225	HB225-325	HRc30-50	-FCD500					
						O		©		

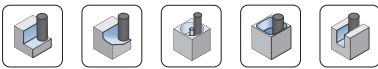
# AWE313

## 3 FLUTES SQUARE ENDMILL



### ► Tolerance

D		Shank Dia
All Sizes	0 ~ -0.02	h5



EDP No		DC	APMX	LU	OAL	DCONMS
Uncoated	Coated					
AWE313 01002	AWE313 01002C	1.0	2	7	40	6
AWE313 01003	AWE313 01003C	1.0	3	8	50	6
AWE313 01004	AWE313 01004C	1.0	4	9	60	6
AWE313 01006	AWE313 01006C	1.0	6	11	60	6
AWE313 01204	AWE313 01204C	1.2	4	9	50	6
AWE313 01503	AWE313 01503C	1.5	3	8	45	6
AWE313 01504	AWE313 01504C	1.5	4	9	45	6
AWE313 01505	AWE313 01505C	1.5	5	10	50	6
AWE313 01506	AWE313 01506C	1.5	6	11	60	6
AWE313 01508	AWE313 01508C	1.5	8	13	60	6
AWE313 01510	AWE313 01510C	1.5	10	15	60	6
AWE313 02003	AWE313 02003C	2.0	3	8	45	6
AWE313 02006	AWE313 02006C	2.0	6	11	50	6
AWE313 02008	AWE313 02008C	2.0	8	13	60	6
AWE313 02010	AWE313 02010C	2.0	10	15	60	6
AWE313 02012	AWE313 02012C	2.0	12	17	60	6
AWE313 02504	AWE313 02504C	2.5	4	9	45	6
AWE313 02508	AWE313 02508C	2.5	8	13	50	6
AWE313 02510	AWE313 02510C	2.5	10	15	55	6
AWE313 02512	AWE313 02512C	2.5	12	17	60	6
AWE313 03004	AWE313 03004C	3	4	9	45	6
AWE313 03008	AWE313 03008C	3	8	13	50	6
AWE313 03012	AWE313 03012C	3	12	17	55	6
AWE313 03015	AWE313 03015C	3	15	20	65	6
AWE313 03512	AWE313 03512C	3.5	12	17	55	6
AWE313 04006	AWE313 04006C	4	6	11	45	6

※ Coated products are made to order

### ► Applicable working material

○ : GOOD ◎ : EXCELLENT

H		P			K	N			M	S
Hardened steel		Carbon Steel	Alloy Steel	Prehardened Steel	Cast Iron	Copper	Graphite	Aluminum	Stainless Steel	Heat Resistant Alloy
SKD61 ~HRC55	SKD11 HRC55~	~HB225	HB225~325	HRC30~50	~FCD500					
						○		◎		

# AWE313

## 3 FLUTES SQUARE ENDMILL

EDPNo		DC	APMX	LU	OAL	DCONMS
Uncoated	Coated					
AWE313 04008	AWE313 04008C	4	8	13	50	6
AWE313 04011	AWE313 04011(	4	11	16	50	6
AWE313 04014	AWE313 04014C	4	14	19	55	6
AWE313 04016	AWE313 04016C	4	16	21	65	6
AWE313 04020	AWE313 04020C	4	20	25	70	6
AWE313 04515	AWE313 04S15C	4.5	15	20	55	6
AWE313 05006	AWE313 05006C	5	6	11	45	6
AWE313 05017	AWE313 OS017C	5	17	22	55	6
AWE313 05022	AWE313 05022(	5	22	27	60	6
AWE313 05026	AWE313 OS026C	5	26	31	70	6
AWE313 05517	AWE313 05S17C	5.5	17	22	55	6
AWE313 06007	AWE313 06007(	6	7	14	50	6
AWE313 06013	AWE313 06013C	6	13	20	55	6
AWE313 06017	AWE313 06017(	6	17	24	60	6
AWE313 06022	AWE313 06022(	6	22	29	60	6
AWE313 06026	AWE313 06026C	6	26	33	70	6
AWE313 06031	AWE313 06031(	6	31	<b>38</b>	75	6
AWE313 07023	AWE313 07023C	7	23	30	65	8
AWE313 08012	AWE313 08012(	8	12	19	60	8
AWE313 08020	AWE313 08020C	8	20	27	60	8
AWE313 08023	AWE313 08023C	8	23	30	70	8
AWE313 08029	AWE313 08029C	8	29	36	80	8
AWE313 08031	AWE313 08031(	8	31	<b>38</b>	80	8
AWE313 08036	AWE313 08036C	8	36	43	85	8
AWE313 09028	AWE313 09028(	9	28	35	70	10
AWE31310012	AWE31310012(	10	12	20	65	10
AWE31310015	AWE31310015C	10	15	23	65	10
AWE31310023	AWE31310023C	10	23	31	65	10
AWE31310028	AWE31310028(	10	28	36	75	10
AWE31310033	AWE31310033C	10	33	41	90	10
AWE31310036	AWE31310036C	10	36	44	90	10
AWE313 10041	AWE31310041(	10	41	49	90	10
AWE31310046	AWE31310046C	10	46	54	100	10
AWE31310051	AWE31310051(	10	51	<b>59</b>	100	10
AWE313 11030	AWE31311030(	<b>11</b>	30	<b>38</b>	80	12
AWE313 12014	AWE31312014C	12	14	24	70	12
AWE313 12027	AWE31312027(	12	27	37	75	12
AWE31312033	AWE31312033C	12	33	43	80	12
AWE31312041	AWE31312041C	12	41	51	95	12
AWE313 12046	AWE31312046(	12	46	56	100	12
AWE313 12051	AWE31312051(	12	51	61	100	12
AWE31312056	AWE31312056C	12	56	66	110	12

\*Coated products are made to order

◆Applicable working material

O : GOOD © : EXCELLENT

H		P			K	N			M	S
Hardened steel		Carbon Steel	Alloy Steel	Prehardened Steel	Cast Iron	Copper	Graphite	Aluminum	Stainless Steel	Heat Resistant Alloy
SKD61 -HRc55	SKD11 HRc55-	-HB225	HB225-325	HRc30-50	-FCD500					
						O		©		

# AWE313

## 3 FLUTES SQUARE ENDMILL

EDPNo		DC	APMX	LU	OAL	DCONMS
Uncoated	Coated					
AWE31312061	AWE31312061C	12	61	71	110	12
AWE31313035	AWE31313035C	13	35	45	85	14
AWE31314038514	AWE3131403BS14C	14	38	48	90	14
AWE31314038	AWE3131403BC	14	38	48	90	16
AWE31315040	AWE31315040C	15	40	50	90	16
AWE31316019	AWE31316019C	16	19	29	90	16
AWE31316033	AWE31316033C	16	33	43	90	16
AWE31316045	AWE31316045C	16	45	55	100	16
AWE31316053	AWE31316053C	16	53	63	105	16
AWE313160S6	AWE313160S6C	16	56	66	110	16
AWE31316066	AWE31316066C	16	66	76	130	16
AWE31316076	AWE31316076C	16	76	86	150	16
AWE31318049	AWE31318049C	18	49	59	100	18
AWE313 20023	AWE313 20023C	20	23	33	90	20
AWE313 20039	AWE313 20039C	20	39	49	95	20
AWE313 20050	AWE313 20050C	20	50	60	105	20
AWE313 20055	AWE313 20055C	20	55	65	110	20
AWE313 20060	AWE313 20060C	20	60	70	120	20
AWE313 20065	AWE313 20065C	20	65	75	130	20
AWE313 20070	AWE313 20070C	20	70	80	130	20
AWE313 20076	AWE313 20076C	20	76	86	150	20

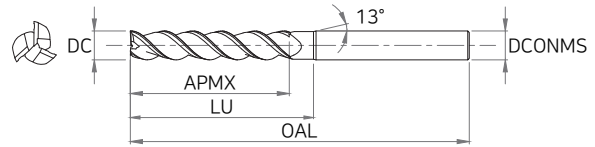
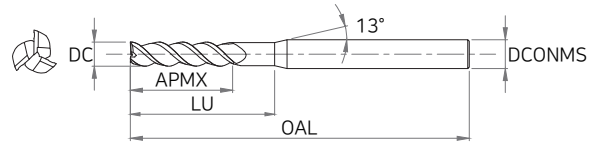
\* Coated products are made to order

◆ Applicable working material

O : GOOD © : EXCELLENT

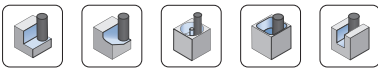
H		P			K	N			M	S
Hardened steel		Carbon Steel	Alloy Steel	Prehardened Steel	Cast Iron	Copper	Graphite	Aluminum	Stainless Steel	Heat Resistant Alloy
SKD61 -HRc55	SKD11 HRc55-	-HB225	HB225-325	HRc30-50	-FCD500					
						O		©		





► Tolerance

D		Shank Dia
All Sizes	0 ~ -0.02	h5



EDP No		DC	APMX	LU	OAL	DCONMS
Uncoated	Coated					
AWE323 01512	AWE323 01512C	1.5	12	17	60	6
AWE323 02014	AWE323 02014C	2.0	14	19	60	6
AWE323 02016	AWE323 02016C	2.0	16	21	60	6
AWE323 02515	AWE323 02515C	2.5	15	20	60	6
AWE323 03020	AWE323 03020C	3.0	20	25	70	6
AWE323 03025	AWE323 03025C	3.0	25	30	75	6
AWE323 03030	AWE323 03030C	3.0	30	35	80	6
AWE323 04026	AWE323 04026C	4.0	26	31	75	6
AWE323 04030	AWE323 04030C	4.0	30	35	80	6
AWE323 05031	AWE323 05031C	5.0	31	36	75	6
AWE323 05036	AWE323 05036C	5.0	36	41	80	6
AWE323 05041	AWE323 05041C	5.0	41	46	85	6
AWE323 05046	AWE323 05046C	5.0	46	51	90	6
AWE323 06036	AWE323 06036C	6.0	36	43	80	6
AWE323 06043	AWE323 06043C	6.0	43	50	90	6
AWE323 06051	AWE323 06051C	6.0	51	58	100	6
AWE323 08041	AWE323 08041C	8.0	41	48	90	8
AWE323 08046	AWE323 08046C	8.0	46	53	95	8
AWE323 08051	AWE323 08051C	8.0	51	58	100	8
AWE323 08056	AWE323 08056C	8	56	63	105	8
AWE323 08060	AWE323 08060C	8	60	67	110	8
AWE323 08066	AWE323 08066C	8	66	73	110	8
AWE323 10056	AWE323 10056C	10	56	64	110	10
AWE323 10061	AWE323 10061C	10	61	69	110	10
AWE323 10066	AWE323 10066C	10	66	74	120	10
AWE323 12066	AWE323 12066C	12	66	76	120	12

※ Coated products are made to order

► Applicable working material

○ : GOOD ◎ : EXCELLENT

H		P			K	N			M	S
Hardened steel		Carbon Steel	Alloy Steel	Prehardened Steel	Cast Iron	Copper	Graphite	Aluminum	Stainless Steel	Heat Resistant Alloy
SKD61 ~HRc55	SKD11 HRc55~	~HB225	HB225~325	Hrc30~50	~FCD500					
						○		◎		

# AWE323

## 3 FLUTES SQUARE ENDMILL

EDPNo		DC	APMX	LU	OAL	DCONMS
Uncoated	Coated					
AWBZ312071	AWBZ312071C	12	71	81	120	12
AWBZ312076	AWBZ312076C	12	76	86	135	12
AWBZ312080	AWBZ312080C	12	80	90	140	12
AWBZ316080	AWBZ316080C	16	80	90	160	16
AWBZ316086	AWBZ316086C	16	86	96	160	16
AWBZ316096	AWE32316096C	16	96	106	180	16
AWBZ3160100	AWE323160100C	16	100	110	190	16
AWBZ3160106	AWE323160106C	16	106	116	190	16
AWB23160116	AWB23160116C	16	116	126	200	16
AWBZ3 20086	AWBZ3 20086C	20	86	96	160	20
AWBZ3 20096	AWBZ3 20096C	20	96	106	180	20
AWB23 200106	AWB23 200106C	20	106	116	190	20
AWBZ3 200116	AWE323 200116C	20	116	126	200	20
AWBZ3 200126	AWE323 200126C	20	126	136	220	20
AWBZ3 200150	AWBZ3 200150C	20	150	160	220	20

\* Coated products are made to order

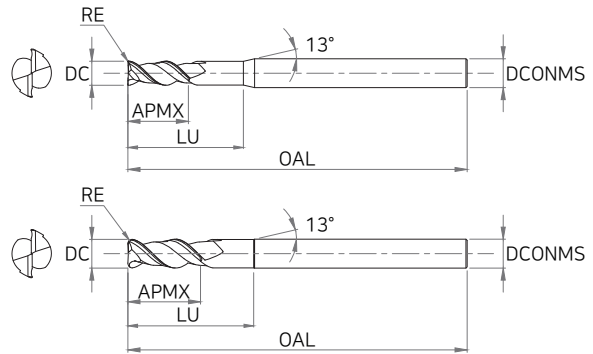
### ◆ Applicable working material

O : GOOD © : EXCELLENT

H		P			K	N			M	S
Hardened steel		Carbon Steel	Alloy Steel	Prehardened Steel	Cast Iron	Copper	Graphite	Aluminum	Stainless Steel	Heat Resistant Alloy
SKD61 -HRc55	SKD11 HRc55-	-HB225	HB225-325	HRc30-50	-FCD500					
						O		©		

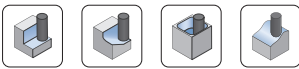
# AWR312

## 2 FLUTES RADIUS ENDMILL



### ► Tolerance

D		Shank Dia
All Sizes	0 ~ -0.02	h5



EDP No		DC	RE	APMX	LU	OAL	DCONMS
Uncoated	Coated						
AWR312 010005	AWR312 010005C	1.0	0.05	3	8	45	6
AWR312 015005	AWR312 015005C	1.5	0.05	5	10	45	6
AWR312 02001	AWR312 02001C	2.0	0.1	6	11	45	6
AWR312 0200112	AWR312 0200112C	2.0	0.1	12	17	50	6
AWR312 03001	AWR312 03001C	3.0	0.1	10	15	50	6
AWR312 0300120	AWR312 0300120C	3.0	0.1	20	25	60	6
AWR312 04001	AWR312 04001C	4.0	0.1	12	17	50	6
AWR312 0400120	AWR312 0400120C	4.0	0.1	20	25	60	6
AWR312 05001	AWR312 05001C	5.0	0.1	15	20	55	6
AWR312 06001	AWR312 06001C	6.0	0.1	15	22	55	6
AWR312 06005	AWR312 06005C	6.0	0.5	15	22	55	6
AWR312 06010	AWR312 06010C	6.0	1	15	22	55	6
AWR312 06015	AWR312 06015C	6.0	1.5	15	22	55	6
AWR312 06020	AWR312 06020C	6.0	2	15	22	55	6
AWR312 07001	AWR312 07001C	7.0	0.1	20	27	60	8
AWR312 08001	AWR312 08001C	8	0.1	20	27	60	8
AWR312 08005	AWR312 08005C	8	0.5	20	27	60	8
AWR312 08010	AWR312 08010C	8	1	20	27	60	8
AWR312 08015	AWR312 08015C	8	1.5	20	27	60	8
AWR312 08020	AWR312 08020C	8	2	20	27	60	8
AWR312 08030	AWR312 08030C	8	3	20	27	60	8
AWR312 09001	AWR312 09001C	9	0.1	25	32	70	10
AWR312 10002	AWR312 10002C	10	0.2	25	33	70	10
AWR312 10005	AWR312 10005C	10	0.5	25	33	70	10
AWR312 10010	AWR312 10010C	10	1	25	33	70	10
AWR312 10015	AWR312 10015C	10	1.5	25	33	70	10

\* Coated products are made to order

### ► Applicable working material

○ : GOOD ◎ : EXCELLENT

H		P			K	N			M	S
Hardened steel		Carbon Steel	Alloy Steel	Prehardened Steel	Cast Iron	Copper	Graphite	Aluminum	Stainless Steel	Heat Resistant Alloy
SKD61 ~HRc55	SKD11 HRc55~	~HB225	HB225~325	HRc30~50	~FCD500					
						○		◎		

# AWR312

## 2 FLUTES RADIUS ENDMILL

EDPNo		DC	RE	APMX	LU	DAL	DCDNMS
Uncoated	Coated						
AWR31210020	AWR312 10020C	10	2	25	33	70	10
AWR31210030	AWR312 10030C	10	3	25	33	70	10
AWR31210040	AWR312 10040C	10	4	25	33	70	10
AWR31211005	AWR31211005C	11	0.5	30	38	80	12
AWR31212005	AWR312 12005C	12	0.5	30	40	80	12
AWR31212010	AWR31212010C	12	1	30	40	80	12
AWR31212020	AWR31212020C	12	2	30	40	80	12
AWR31212030	AWR31212030C	12	3	30	40	80	12
AWR31212040	AWR312 12040C	12	4	30	40	80	12
AWR31214010S14	AWR31214010S14C	14	1	35	45	85	14
AWR31214020S14	AWR31214020S14C	14	2	35	45	85	14
AWR31214030S14	AWR31214030S14C	14	3	35	45	85	14
AWR31214040S14	AWR31214040S14C	14	4	35	45	85	14
AWR312140S0S14	AWR312140S0S14C	14	5	35	45	85	14
AWR31214010	AWR31214010C	14	1	35	45	85	16
AWR31214020	AWR312 14020C	14	2	35	45	85	16
AWR31214030	AWR31214030C	14	3	35	45	85	16
AWR31214040	AWR31214040C	14	4	35	45	85	16
AWR31214050	AWR312 14050C	14	5	35	45	85	16
AWR31216010	AWR31216010C	16	1	40	SO	90	16
AWR31216020	AWR31216020C	16	2	40	SO	90	16
AWR31216030	AWR31216030C	16	3	40	SO	90	16
AWR31216040	AWR31216040C	16	4	40	SO	90	16
AWR31216050	AWR31216050C	16	5	40	50	90	16
AWR312 20010	AWR312 20010C	20	1	45	55	100	20
AWR312 20020	AWR312 20020C	20	2	45	55	100	20
AWR312 20030	AWR312 20030C	20	3	45	55	100	20
AWR312 20040	AWR312 20040C	20	4	45	55	100	20
AWR312 20050	AWR312 20050C	20	5	45	55	100	20

\*Coated products are made to order

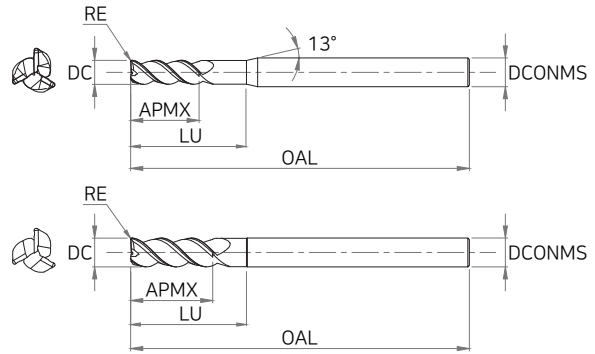
◆Applicable working material

O : GOOD © : EXCELLENT

H		P			K	N			M	S
Hardened steel		Carbon Steel	Alloy Steel	Prehardened Steel	Cast Iron	Copper	Graphite	Aluminum	Stainless Steel	Heat Resistant Alloy
SKD61 -HRc55	SKD11 HRc55-	-HB225	HB225-325	HRc30-50	-FCD500					
						O		©		

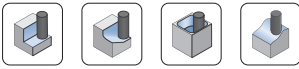
# AWR313

## 3 FLUTES RADIUS ENDMILL



### ► Tolerance

D		Shank Dia
All Sizes	0 ~ -0.02	h5



EDP No		DC	RE	APMX	LU	OAL	DCONMS
Uncoated	Coated						
AWR313 01001	AWR313 01001C	1.0	0.1	3	8	50	6
AWR313 01501	AWR313 01501C	1.5	0.1	5	10	50	6
AWR313 02001	AWR313 02001C	2.0	0.1	6	11	50	6
AWR313 02502	AWR313 02502C	2.5	0.2	10	15	50	6
AWR313 03001	AWR313 03001C	3.0	0.1	12	17	60	6
AWR313 03002	AWR313 03002C	3.0	0.2	12	17	60	6
AWR313 04002	AWR313 04002C	4.0	0.2	14	19	60	6
AWR313 04005	AWR313 04005C	4.0	0.5	14	19	60	6
AWR313 04010	AWR313 04010C	4.0	1	14	19	60	6
AWR313 06003	AWR313 06003C	6.0	0.3	17	24	60	6
AWR313 06005	AWR313 06005C	6.0	0.5	17	24	60	6
AWR313 06010	AWR313 06010C	6.0	1	17	24	60	6
AWR313 06015	AWR313 06015C	6.0	1.5	17	24	60	6
AWR313 06020	AWR313 06020C	6.0	2	17	24	60	6
AWR313 08003	AWR313 08003C	8.0	0.3	20	27	60	8
AWR313 08005	AWR313 08005C	8	0.5	20	27	60	8
AWR313 08010	AWR313 08010C	8	1	20	27	60	8
AWR313 08015	AWR313 08015C	8	1.5	20	27	60	8
AWR313 08020	AWR313 08020C	8	2	20	27	60	8
AWR313 08030	AWR313 08030C	8	3	20	27	60	8
AWR313 10003	AWR313 10003C	10	0.3	25	33	70	10
AWR313 10005	AWR313 10005C	10	0.5	25	33	70	10
AWR313 10010	AWR313 10010C	10	1	25	33	70	10
AWR313 10015	AWR313 10015C	10	1.5	25	33	70	10
AWR313 10020	AWR313 10020C	10	2	25	33	70	10
AWR313 10030	AWR313 10030C	10	3	25	33	70	10

※ Coated products are made to order

### ► Applicable working material

○ : GOOD ◎ : EXCELLENT

H		P			K	N			M	S
Hardened steel		Carbon Steel	Alloy Steel	Prehardened Steel	Cast Iron	Copper	Graphite	Aluminum	Stainless Steel	Heat Resistant Alloy
SKD61 ~HRc55	SKD11 HRc55~	~HB225	HB225~325	HRC30~50	~FCD500					
						○		◎		

# AWR313

## 3 FLUTES RADIUS ENDMILL

EDPNo		DC	RE	APMX	LU	OAL	DCONMS
Uncoated	Coated						
AWR313 10040	AWR313 10040C	10	4	25	33	70	10
AWR31312005	AWR31312005C	12	0.5	30	40	80	12
AWR31312010	AWR31312010C	12	1	30	40	80	12
AWR31312020	AWR313 12020C	12	2	30	40	80	12
AWR31312030	AWR31312030C	12	3	30	40	80	12
AWR31312040	AWR31312040C	12	4	30	40	80	12
AWR31314010S14	AWR31314010S14C	14	1	35	45	85	14
AWR31314020S14	AWR31314020S14C	14	2	35	45	85	14
AWR31314030S14	AWR313 14030S14C	14	3	35	45	85	14
AWR31314040S14	AWR31314040S14C	14	4	35	45	85	14
AWR31314050S14	AWR31314050S14C	14	5	35	45	85	14
AWR31314005	AWR31314005C	14	0.5	35	45	85	16
AWR31314010	AWR31314010C	14	1	35	45	85	16
AWR31314020	AWR31314020C	14	2	35	45	85	16
AWR31314030	AWR31314030C	14	3	35	45	85	16
AWR31314040	AWR313 14040C	14	4	35	45	85	16
AWR31314050	AWR31314050C	14	5	35	45	85	16
AWR31316005	AWR31316005C	16	0.5	40	SO	90	16
AWR31316010	AWR313 16010C	16	1	40	SO	90	16
AWR31316020	AWR31316020C	16	2	40	SO	90	16
AWR31316030	AWR31316030C	16	3	40	SO	90	16
AWR31316040	AWR31316040C	16	4	40	SO	90	16
AWR31316050	AWR31316050C	16	5	40	SO	90	16
AWR313 20005	AWR313 20005C	20	0.5	45	55	100	20
AWR313 20010	AWR313 20010C	20	1	45	55	100	20
AWR313 20020	AWR313 20020C	20	2	45	55	100	20
AWR313 20030	AWR313 20030C	20	3	45	55	100	20
AWR313 20040	AWR313 20040C	20	4	45	55	100	20
AWR313 20050	AWR313 20050C	20	5	45	55	100	20

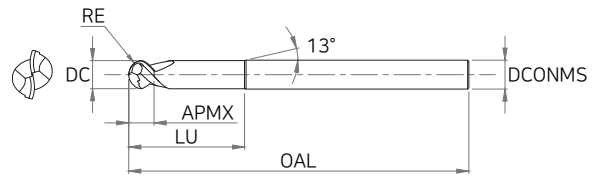
◆ Coated products are made to order

◆ Applicable working material

O : GOOD © : EXCELLENT

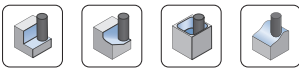
H		P			K	N			M	S
Hardened steel		Carbon Steel	Alloy Steel	Prehardened Steel	Cast Iron	Copper	Graphite	Aluminum	Stainless Steel	Heat Resistant Alloy
SKD61 -HRC55	SKD11 HRC55-	-HB225	HB225-325	HRC30-50	-FCD500					
						O		©		

# AWB312 | 2 FLUTES BALL ENDMILL



## ► Tolerance

D		Shank Dia
All Sizes	0 ~ -0.03	h5



EDP No		DC	RE	APMX	LU	OAL	DCONMS
Uncoated	Coated						
AWB312 06025	AWB312 06025C	6.0	3	5.5	25	55	6
AWB312 06040	AWB312 06040C	6.0	3	5.5	40	90	6
AWB312 08030	AWB312 08030C	8.0	4	7	30	65	8
AWB312 08050	AWB312 08050C	8.0	4	7	50	100	8
AWB312 10035	AWB312 10035C	10.0	5	8.5	35	75	10
AWB312 10050	AWB312 10050C	10.0	5	10	50	100	10
AWB312 10060	AWB312 10060C	10.0	5	10	60	150	10
AWB312 12040	AWB312 12040C	12.0	6	10.5	40	75	12
AWB312 12050	AWB312 12050C	12.0	6	12	50	110	12
AWB312 12060	AWB312 12060C	12.0	6	12	60	150	12
AWB312 16050	AWB312 16050C	16.0	8	14	50	90	16
AWB312 16070	AWB312 16070C	16.0	8	16	70	150	16
AWB312 16090	AWB312 16090C	16.0	8	16	90	200	16
AWB312 20050	AWB312 20050C	20.0	10	17	50	100	20

※ Coated products are made to order

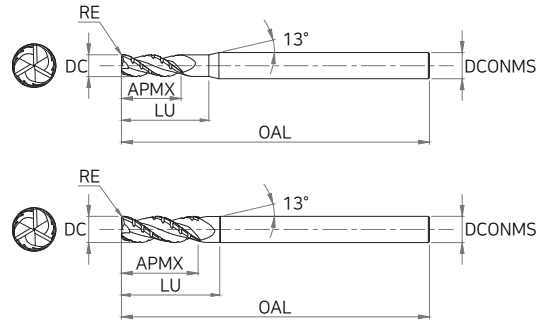
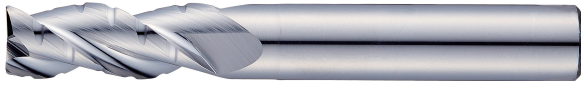
## ► Applicable working material

○ : GOOD ◎ : EXCELLENT

H		P			K	N			M	S
Hardened steel		Carbon Steel	Alloy Steel	Prehardened Steel	Cast Iron	Copper	Graphite	Aluminum	Stainless Steel	Heat Resistant Alloy
SKD61 ~HRc55	SKD11 HRc55~	~HB225	HB225~325	HRc30~50	~FCD500					
						○		◎		

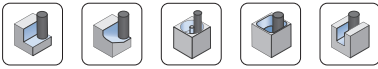
# AWN513

## 3 FLUTES CHIP BREAKER ENDMILL



### ► Tolerance

D		Shank Dia
All Sizes	0 ~ -0.02	h5



EDP No		DC	RE	APMX	LU	OAL	DCONMS
Uncoated	Coated						
AWN513 03011	AWN513 03011C	3.0	0.2	11	16	55	6
AWN513 04013	AWN513 04013C	4.0	0.2	13	18	55	6
AWN513 05017	AWN513 05017C	5.0	0.2	17	22	55	6
AWN513 06017	AWN513 06017C	6.0	0.3	17	24	60	6
AWN513 06025	AWN513 06025C	6.0	0.3	25	32	80	6
AWN513 08022	AWN513 08022C	8.0	0.3	22	29	70	8
AWN513 08030	AWN513 08030C	8.0	0.3	30	37	90	8
AWN513 10027	AWN513 10027C	10.0	0.5	27	35	75	10
AWN513 10040	AWN513 10040C	10.0	0.5	40	48	100	10
AWN513 12035	AWN513 12035C	12.0	0.5	35	45	90	12
AWN513 12050	AWN513 12050C	12.0	0.5	50	60	110	12
AWN513 16042	AWN513 16042C	16.0	0.5	42	52	100	16
AWN513 16052	AWN513 16052C	16.0	0.5	52	62	150	16
AWN513 20048	AWN513 20048C	20.0	0.5	48	58	100	20
AWN513 20055	AWN513 20055C	20.0	0.5	55	65	160	20

※ Coated products are made to order

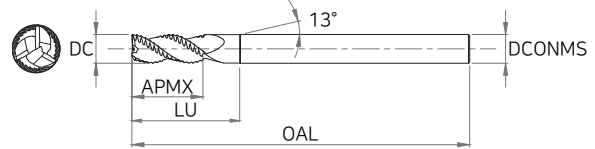
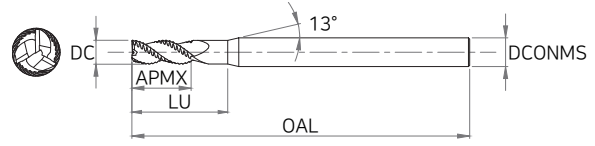
### ► Applicable working material

○ : GOOD ◎ : EXCELLENT

H		P			K	N			M	S
Hardened steel		Carbon Steel	Alloy Steel	Prehardened Steel	Cast Iron	Copper	Graphite	Aluminum	Stainless Steel	Heat Resistant Alloy
SKD61 ~HRc55	SKD11 HRc55~	~HB225	HB225~325	Hrc30~50	~FCD500					
						○		◎		

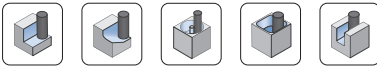
# AWF513

## 3 FLUTES 38° HELIX ROUGHING ENDMILL



### ► Tolerance

D		Shank Dia
D4 ~ D6	0 ~ -0.048	
D7 ~ D10	0 ~ -0.058	h6
D12 ~ D18	0 ~ -0.07	
D20	0 ~ -0.084	



EDP No		DC	APMX	LU	OAL	DCONMS
Uncoated	Coated					
AWF513 04010	AWF513 04010C	4.0	10	15	55	6
AWF513 05015	AWF513 05015C	5.0	15	20	55	6
AWF513 06016	AWF513 06016C	6.0	16	23	60	6
AWF513 06025	AWF513 06025C	6.0	25	32	80	6
AWF513 07016	AWF513 07016C	7.0	16	23	63	8
AWF513 08020	AWF513 08020C	8.0	20	27	65	8
AWF513 08030	AWF513 08030C	8.0	30	37	90	8
AWF513 09019	AWF513 09019C	9.0	19	26	72	10
AWF513 10025	AWF513 10025C	10.0	25	33	75	10
AWF513 10040	AWF513 10040C	10.0	40	48	100	10
AWF513 12030	AWF513 12030C	12.0	30	40	90	12
AWF513 12050	AWF513 12050C	12.0	50	60	110	12
AWF513 14035S14	AWF513 14035S14C	14.0	35	45	100	14
AWF513 14035	AWF513 14035C	14.0	35	45	100	16
AWF513 16042	AWF513 16042C	16.0	42	52	100	16
AWF513 16052	AWF513 16052C	16.0	52	62	150	16
AWF513 16065	AWF513 16065C	16.0	65	75	150	16
AWF513 18032	AWF513 18032C	18.0	32	42	92	18
AWF513 20038	AWF513 20038C	20.0	38	48	104	20
AWF513 20055	AWF513 20055C	20.0	55	65	160	20

※ Coated products are made to order

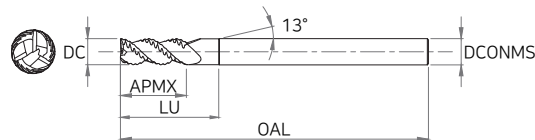
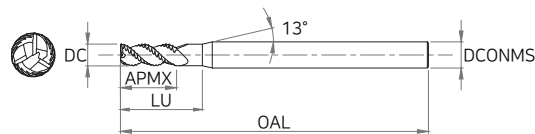
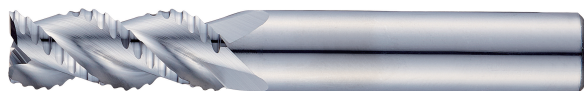
### ► Applicable working material

○ : GOOD ◎ : EXCELLENT

H		P			K	N			M	S
Hardened steel		Carbon Steel	Alloy Steel	Prehardened Steel	Cast Iron	Copper	Graphite	Aluminum	Stainless Steel	Heat Resistant Alloy
SKD61 ~HRc55	SKD11 HRc55~	~HB225	HB225~325	HRC30~50	~FCD500					
						○		◎		

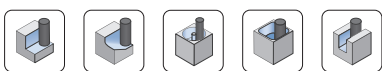
# AWF583

## 3 FLUTES 45° HELIX ROUGHING ENDMILL



### ► Tolerance

D		Shank Dia
D4 ~ D6	0 ~ -0,048	
D8 ~ D10	0 ~ -0,058	h5
D12 ~ D18	0 ~ -0,07	
D20	0 ~ -0,084	



EDP No		DC	AP22MX	LU	OAL	DCONMS
Uncoated	Coated					
AWF583 04006	AWF583 04006C	4.0	6	12	60	6
AWF583 04010	AWF583 04010C	4.0	10	15	60	6
AWF583 05007	AWF583 05007C	5.0	7	20	60	6
AWF583 05015	AWF583 05015C	5.0	15	20	60	6
AWF583 06008	AWF583 06008C	6.0	8	20	70	6
AWF583 06015	AWF583 06015C	6.0	15	22	60	6
AWF583 06025	AWF583 06025C	6.0	25	32	80	6
AWF583 08010	AWF583 08010C	8.0	10	26	80	8
AWF583 08020	AWF583 08020C	8.0	20	27	65	8
AWF583 08030	AWF583 08030C	8.0	30	37	90	8
AWF583 10012	AWF583 10012C	10.0	12	32	90	10
AWF583 10025	AWF583 10025C	10.0	25	33	70	10
AWF583 10040	AWF583 10040C	10.0	40	48	100	10
AWF583 12014	AWF583 12014C	12.0	14	36	100	12
AWF583 12030	AWF583 12030C	12.0	30	40	90	12
AWF583 12050	AWF583 12050C	12.0	50	60	110	12
AWF583 14035	AWF583 14035C	14.0	35	45	100	16
AWF583 16018	AWF583 16018C	16.0	18	46	120	16
AWF583 16042	AWF583 16042C	16.0	42	52	100	16
AWF583 16052	AWF583 16052C	16.0	52	62	150	16
AWF583 18045	AWF583 18045C	18.0	45	55	110	20
AWF583 20022	AWF583 20022C	20.0	22	52	120	20
AWF583 20048	AWF583 20048C	20.0	48	58	110	20
AWF583 20055	AWF583 20055C	20.0	55	65	160	20

※ Coated products are made to order

### ► Applicable working material

○ : GOOD ◎ : EXCELLENT

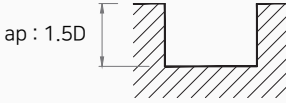
H		P			K	N			M	S
Hardened steel		Carbon Steel	Alloy Steel	Prehardened Steel	Cast Iron	Copper	Graphite	Aluminum	Stainless Steel	Heat Resistant Alloy
SKD61 ~HRC55	SKD11 HRC55~	~HB225	HB225~325	HRC30~50	~FCD500					
						○		◎		

# Recommended Cutting Conditions

## ■ AWE311

Workpiece	Slotting			
	Acrylic		Alloy Steels	
	Cutting Dia. (mm)	RPM	FEED	RPM
1	32,000	2,000	23,000	1,300
2	32,000	2,200	23,000	1,500
3	25,000	2,400	18,000	1,700
4	20,000	2,400	15,000	1,800
5	15,000	2,200	12,000	1,800
6	13,500	2,300	10,000	1,800
8	10,000	2,400	7,800	1,900
10	8,000	2,400	6,000	2,000
12	7,000	2,200	5,000	1,900

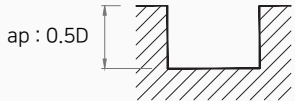
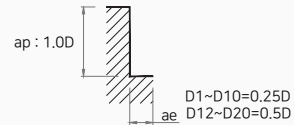
RPM = rev / min  
FEED = mm / min



## ■ AWE312

Workpiece	Slotting		Side Cutting	
	Aluminium, NON Ferrous Metals		Aluminium, NON Ferrous Metals	
	Cutting Dia. (mm)	RPM	FEED	RPM
1	16,870	505	16,870	845
1.2	16,450	510	16,450	850
1.5	13,150	525	13,150	790
2	11,300	565	11,300	790
2.5	10,565	635	10,565	845
3	10,000	700	10,000	900
4	10,000	900	10,000	1,100
5	10,000	1,000	10,000	1,300
6	10,000	1,200	10,000	1,500
7	8,850	1,240	8,850	1,505
8	8,000	1,400	8,000	1,800
10	8,000	1,700	8,000	2,100
12	8,000	2,100	8,000	2,600
14	6,000	1,800	6,000	2,200
16	6,000	1,900	6,000	2,400
18	4,000	1,400	4,000	1,800
20	4,000	1,600	4,000	1,900

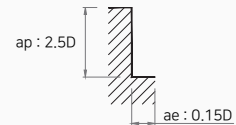
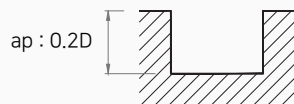
RPM = rev / min  
FEED = mm / min

## ■ AWE313, AWE323

Workpiece	Slotting		Side Cutting	
	Aluminium, NON Ferrous Metals		Aluminium, NON Ferrous Metals	
	Cutting Dia. (mm)	RPM	FEED	RPM
1	17,000	550	17,000	900
1.2	16,000	550	16,000	850
1.5	13,000	500	13,000	850
2	10,000	400	10,000	640
2.5	8,000	380	8,000	520
3	7,000	350	7,000	455
3.5	7,000	350	7,000	550
4	7,000	441	7,000	546
4.5	7,000	500	7,000	600
5	7,000	504	7,000	651
5.5	7,000	605	7,000	700
6	7,000	606	7,000	756
7	6,000	700	6,000	820
8	5,600	700	5,600	861
9	5,600	800	5,600	900
10	5,600	854	5,600	1,050
12	5,600	1,050	5,600	822
14	4,200	903	4,200	1,106
16	4,200	945	4,200	1,211
18	2,800	700	2,800	910
20	2,800	805	2,800	956

RPM = rev / min  
FEED = mm / min

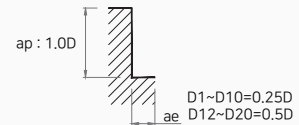
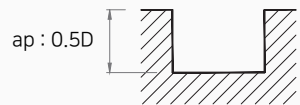


# Recommended Cutting Conditions

## ■ AWR312

Workpiece	Slotting		Side Cutting	
	Aluminium, NON Ferrous Metals		Aluminium, NON Ferrous Metals	
Cutting Dia. (mm)	RPM	FEED	RPM	FEED
1	16,870	505	16,870	845
1.5	13,150	525	13,150	790
2	11,300	565	11,300	790
2.5	10,565	635	10,565	845
3	10,000	700	10,000	900
4	10,000	900	10,000	1,100
5	10,000	1,000	10,000	1,300
6	10,000	1,200	10,000	1,500
8	8,000	1,400	8,000	1,800
10	8,000	1,700	8,000	2,100
12	8,000	2,100	8,000	2,600
14	6,000	1,800	6,000	2,200
16	6,000	1,900	6,000	2,400
18	4,000	1,400	4,000	1,800
20	4,000	1,600	4,000	1,900

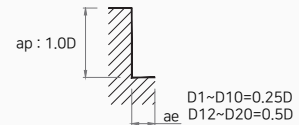
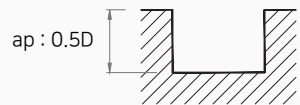
RPM = rev / min  
FEED = mm / min



## ■ AWR313

Workpiece	Slotting		Side Cutting	
	Aluminium, NON Ferrous Metals		Aluminium, NON Ferrous Metals	
Cutting Dia. (mm)	RPM	FEED	RPM	FEED
1	17,000	550	17,000	900
1.5	13,000	500	13,000	850
2	10,000	400	10,000	640
2.5	8,000	380	8,000	520
3	10,000	350	10,000	650
4	10,000	630	10,000	780
5	10,000	720	10,000	930
6	10,000	865	10,000	1,080
8	8,000	1,000	8,000	1,230
10	8,000	1,220	8,000	1,500
12	8,000	1,500	8,000	1,260
14	6,000	1,290	6,000	1,580
16	6,000	1,350	6,000	1,730
18	4,000	1,000	4,000	1,300
20	4,000	1,150	4,000	1,365

RPM = rev / min  
FEED = mm / min

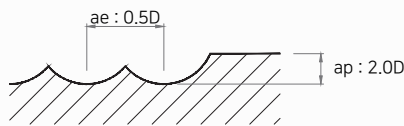


# Recommended Cutting Conditions

## AWB312

Workpiece	Slotting	
	Aluminium, NON Ferrous Metals	
Cutting Dia. (mm)	RPM	FEED
6	18,000	1,750
8	14,000	2,000
10	14,000	2,350
12	14,000	3,000
16	11,000	2,700
20	8,000	2,200

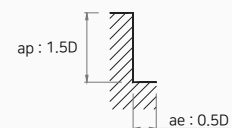
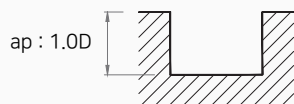
RPM = rev / min  
FEED = mm / min



## AWN513

Workpiece	Slotting		Side Cutting	
	Aluminium, NON Ferrous Metals		Aluminium, NON Ferrous Metals	
Cutting Dia. (mm)	RPM	FEED	RPM	FEED
3	51,778	3,946	64,723	4,932
4	38,834	4,893	48,542	6,116
5	31,067	5,499	38,834	6,874
6	25,889	5,918	32,362	7,398
8	19,417	5,534	24,271	6,917
10	15,534	5,326	19,417	6,658
12	12,945	5,918	16,181	7,398
16	9,708	4,883	12,136	6,103
20	7,767	4,439	9,708	5,548

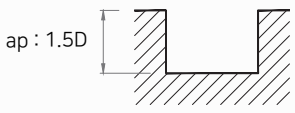
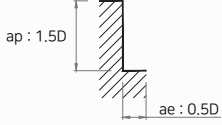
RPM = rev / min  
FEED = mm / min



## AWF513

Workpiece	Slotting		Side Cutting	
	Aluminium, NON Ferrous Metals		Aluminium, NON Ferrous Metals	
	Cutting Dia. (mm)	RPM	FEED	RPM
4	15,000	7,000	20,000	9,000
5	12,000	6,000	16,000	8,000
6	10,500	5,300	13,500	6,800
8	8,000	4,000	10,500	5,300
10	6,500	3,500	8,500	4,300
12	5,250	2,500	6,800	3,400
14	4,500	2,200	5,800	2,900
16	4,000	2,000	5,200	2,600
18	3,550	1,770	4,700	2,350
20	3,200	1,600	4,200	2,100

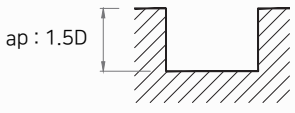
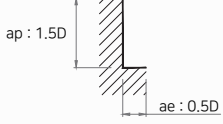
  

<p>RPM = rev / min FEED = mm / min</p> 	
--	--

## AWF583

Workpiece	Slotting		Side Cutting	
	Aluminium, NON Ferrous Metals		Aluminium, NON Ferrous Metals	
	Cutting Dia. (mm)	RPM	FEED	RPM
4	15,000	7,000	20,000	9,000
5	12,000	6,000	16,000	8,000
6	10,500	5,300	13,500	6,800
8	8,000	4,000	10,500	5,300
10	6,500	3,500	8,500	4,300
12	5,250	2,500	6,800	3,400
14	4,500	2,200	5,800	2,900
16	4,000	2,000	5,200	2,600
18	3,550	1,770	4,700	2,350
20	3,200	1,600	4,200	2,100

<p>RPM = rev / min FEED = mm / min</p> 	
--	---



 **PALEARICARLO**  
DIVISION CUTTING TOOLS

Via Asmara, 7  
21052 Busto Arsizio - Italia  
T +39 0331 350 000  
ordini@palearicarlo.com  
www.palearicarlo.com